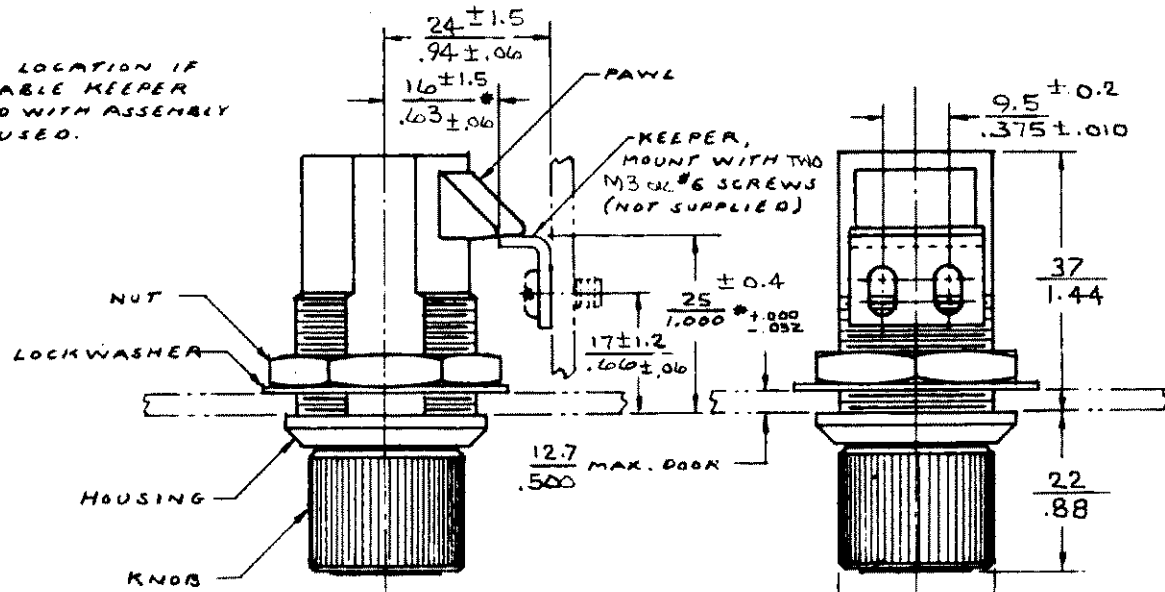


DATE	DRAWN	CHKD	SCALE	DRAWING NUMBER
12-18-86	RJB		N.T.S.	J-93-10-102-50

REV. LET.	DATE	BY-CHKD	REVISIONS	ASSY PARTS
G	6-9-93	JGK	PRN: 93-137	93-10-102-50

* FRAME LOCATION IF ADJUSTABLE KEEPER SUPPLIED WITH ASSEMBLY IS NOT USED.



ASSEMBLY PART NO 93-10-102-50 CONSISTS OF ONE LATCH SUB-ASSY, TWO KEYS, ONE NUT, ONE LOCK-WASHER, AND ONE KEEPER, PACKED IN A PLASTIC BAG.

HOUSING - DIE CAST ZINC, BRIGHT CHROME PLATE
 LOCK - DIE CAST ZINC, BLACK ORGANIC COATING.

KNOB AND PAWL ARE BLACK THERMOPLASTIC.

NUT, LOCKWASHER, AND KEEPER ARE STEEL, DACTOTIZED™

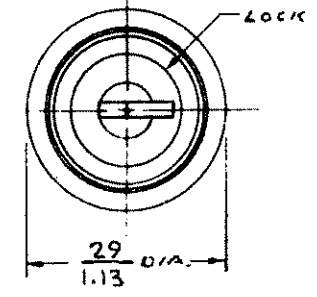
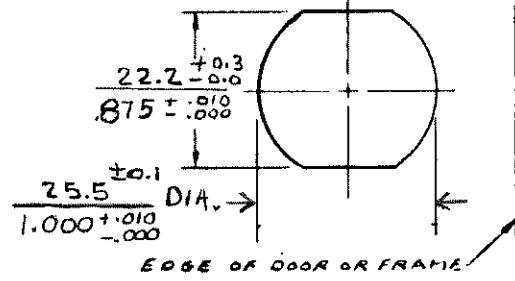
LATCH MAY BE INSTALLED IN A ROUND HOLE IF NUT IS TIGHTENED SUFFICIENTLY TO PREVENT TURNING OF HOUSING.

KEY TURNS ONE-HALF TURN CLOCKWISE TO LOCK, ONE-HALF TURN COUNTER-CLOCKWISE TO UNLOCK. KEY IS REMOVABLE IN LOCKED AND UNLOCKED POSITIONS.

KNOB TURNS ONE QUARTER TURN IN EITHER DIRECTION TO UNLATCH.

MAY BE SLAM CLOSED WHEN LOCKED.

DOOR PREPARATION



MILLIMETER/INCH MILLIMETER
 INCH

TM METAL CONTROLS INT. INC.

PROPRIETARY ITEM- EXCEPT FOR USES EXPRESSLY GRANTED IN WRITING, INFORMATION DISCLOSED HEREON IS CONFIDENTIAL AND ALL RIGHTS, PATENT AND OTHERWISE, ARE RESERVED BY SOUTHCO, INC.

TOLERANCE UNLESS OTHERWISE NOTED
 METRIC MM - TWO PLACE (.XX) ± ONE PLACE (.X) ±
 INCH - DECIMALS ± FRACTIONS ± ANGLES ±

DRAWING NUMBER
 J-93-10-102-50