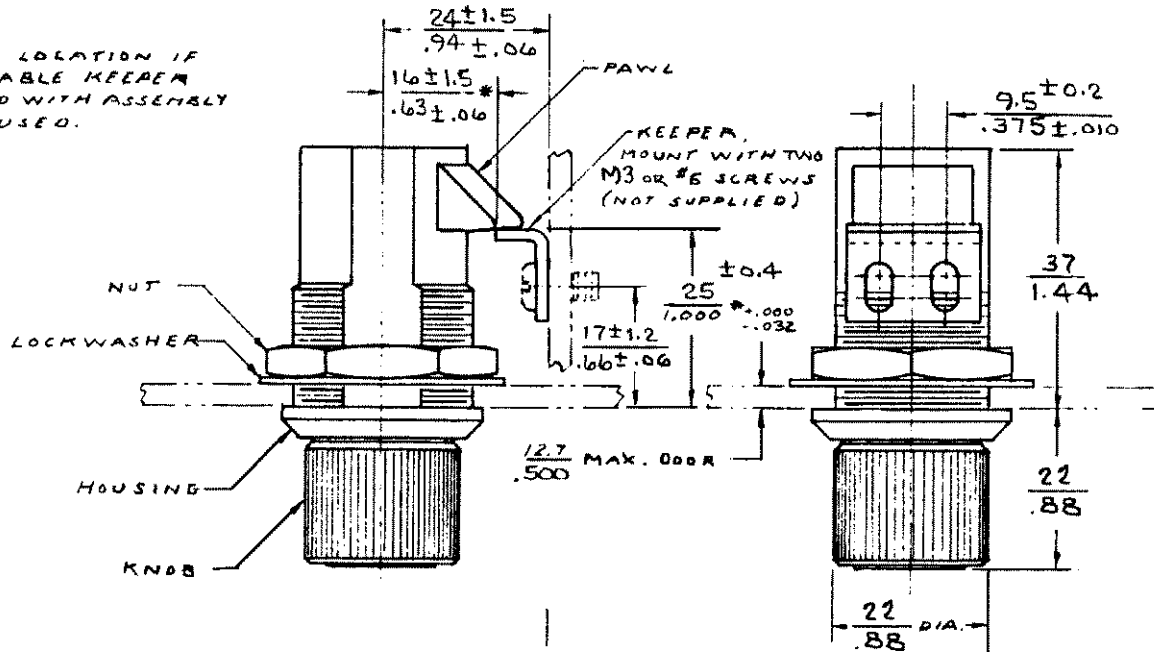


REV. LET.	DATE	BY-CHKD	REVISIONS	ASSY. PART NO.
G	11-16-88	SML	DELETED PREVIOUS REVS. - SEE REISSUE PRINT. PRN: 93-81	93-10-103-10
H	5-14-91	CRW	ADDED TOL. TO MOUNTING HOLE	
I	12 JAN 93	JC	PRN: 5-1-03	
J	6-10-93	JGK	PRN: 93-137	

* FRAME LOCATION IF ADJUSTABLE KEEPER SUPPLIED WITH ASSEMBLY IS NOT USED.



ASSEMBLY PART NO 93-10-103-10 CONSISTS OF ONE LATCH SUB-ASSY, ONE NUT, ONE LOCKWASHER, AND ONE KEEPER, PACKAGED IN A PLASTIC BAG.

HOUSING IS DIE CAST ZINC, BRIGHT CHROME PLATED
 KNOB AND PAWL ARE BLACK THERMOPLASTIC.

NUT, LOCKWASHER, AND KEEPER ARE STEEL, DACROTIZED

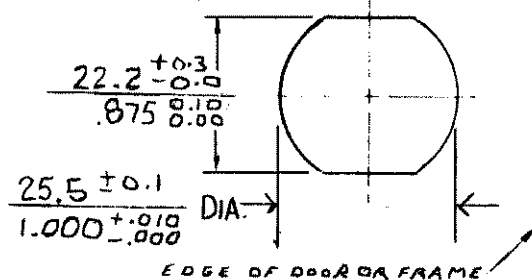
PLUG IN KNOB IS ALUMINUM, NATURAL

LATCH MAY BE INSTALLED IN A ROUND HOLE IF NUT IS TIGHTENED SUFFICIENTLY TO PREVENT TURNING OF HOUSING.

KNOB TURNS ONE-QUARTER TURN IN EITHER DIRECTION TO UNLATCH.

LATCH MAY BE SLAM CLOSED

DOOR PREPARATION



MILLIMETER/INCH

MILLIMETER
INCH

TM METAL COATINGS INT. INC.

PROPRIETARY ITEM- EXCEPT FOR USES EXPRESSLY GRANTED IN WRITING, INFORMATION DISCLOSED HEREON IS CONFIDENTIAL AND ALL RIGHTS, PATENT AND OTHERWISE, ARE RESERVED BY SOUTHCO, INC.

TOLERANCE UNLESS OTHERWISE NOTED
 METRIC MM - TWO PLACE (.XX) ; ONE PLACE (.X) ;
 INCH - DECIMALS ; FRACTIONS ; ANGLES ;

DRAWING NUMBER

J-93-10-103-10