

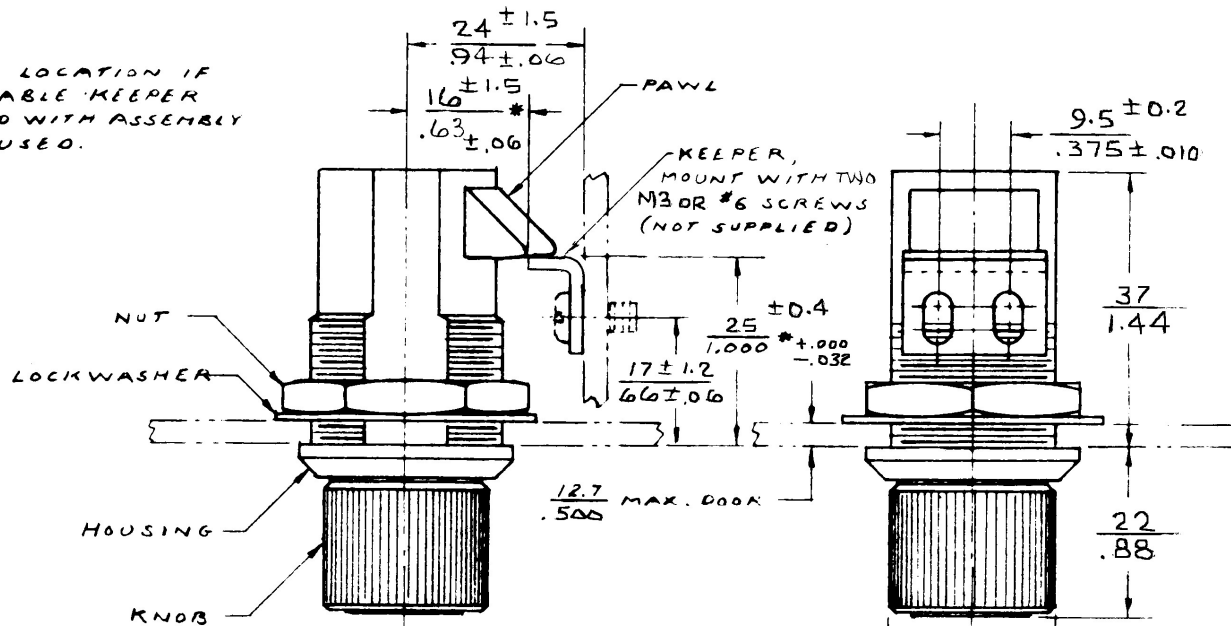


# # 93 LATCH ASSEMBLY

DATE	DRAWN	CHKD	SCALE	DRAWING NUMBER
12-18-86	RJB		NTS	J-93-10-103-50

REV. LET.	DATE	BY-CHKD	REVISIONS	ASSY. PART N°
G	6-9-93	JEK	PRN: 93-137	93-10-103-50

\* FRAME LOCATION IF ADJUSTABLE KEEPER SUPPLIED WITH ASSEMBLY IS NOT USED.



ASSEMBLY PART N° 93-10-103-50 CONSISTS OF ONE LATCH SUB-ASSY, ONE NUT, ONE LOCKWASHER, AND ONE KEEPER, PACKAGED IN A PLASTIC BAG.

HOUSING IS DIE CAST ZINC, BRIGHT CHROME PLATED

KNOB AND PAWL ARE BLACK THERMOPLASTIC.

NUT, LOCKWASHER, AND KEEPER ARE STEEL, DACTOZINED™

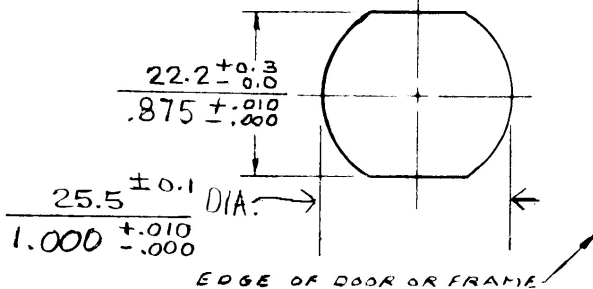
PLUG IN KNOB IS ALUMINUM, BLACK ORGANIC COATING.

LATCH MAY BE INSTALLED IN A ROUND HOLE IF NUT IS TIGHTENED SUFFICIENTLY TO PREVENT TURNING OF HOUSING.

KNOB TURNS ONE-QUARTER TURN IN EITHER DIRECTION TO UNLATCH.

LATCH MAY BE SLAM CLOSED

DOOR PREPARATION



TA METAL COATINGS INT. INC.

MILLIMETER/INCH

MILLIMETER  
INCH

PROPRIETARY ITEM - EXCEPT FOR USES EXPRESSLY GRANTED IN WRITING, INFORMATION DISCLOSED HEREON IS CONFIDENTIAL AND ALL RIGHTS, PATENT AND OTHERWISE ARE RESERVED BY SOUTHCO, INC.

TOLERANCE UNLESS OTHERWISE NOTED  
 METRIC MM - TWO PLACE (.XX) ± ONE PLACE (.X) ±  
 INCH - DECIMALS ± FRACTIONS ± ANGLES ±

DRAWING NUMBER  
J-93-10-103-50